

THE CORPORATION OF THE CITY OF NORTH BAY

BY-LAW NO. 141-82

BEING A BY-LAW TO AMEND BY-LAW NO. 28-80
OF THE CORPORATION OF THE CITY OF NORTH BAY
PURSUANT TO SECTION 39 OF THE PLANNING ACT
R.S.O. 1980, CHAPTER 379

WHEREAS upon the request of the property owner concerned and with the approval of the local Planning Board, it is considered advisable to amend By-law No. 28-80 of The Corporation of the City of North Bay to provide for an alteration to the zone designation shown on Schedule "B-50" which forms part of said By-law No. 28-80;

NOW THEREFORE THE MUNICIPAL COUNCIL OF THE CORPORATION OF THE CITY OF NORTH BAY HEREBY ENACTS AS FOLLOWS:


1. Schedule "B-50" of said By-Law No. 28-80 is amended by changing the zoning designation on that part of said zoning map set out in Schedule "A" attached hereto and forming part hereof, which property is more particularly described as Part of Lot 108, Plan 13 and shown as hatched on Schedule "B" attached hereto and forming part hereof from a "Residential Multiple First Density (RM.1)" Zone to a "General Commercial Outer Core (C.2)" Zone.
2. All buildings and structures erected or altered and the use of land in such "General Commercial Outer Core (C.2)" Zone shall conform to all applicable provisions of By-law No. 28-80 of The Corporation of the City of North Bay.
3. This By-law shall take effect from the date of passing by Council, and shall come into force upon the approval of the Ontario Municipal Board.

READ A FIRST TIME IN OPEN COUNCIL THE 12TH DAY OF JULY, 1982.

READ A SECOND TIME IN OPEN COUNCIL THE 26th DAY OF July, 1982.

READ A THIRD TIME IN OPEN COUNCIL AND ENACTED AND PASSED THIS
26th DAY OF July, 1982.


MAYOR


CLERK

This is Schedule " A "

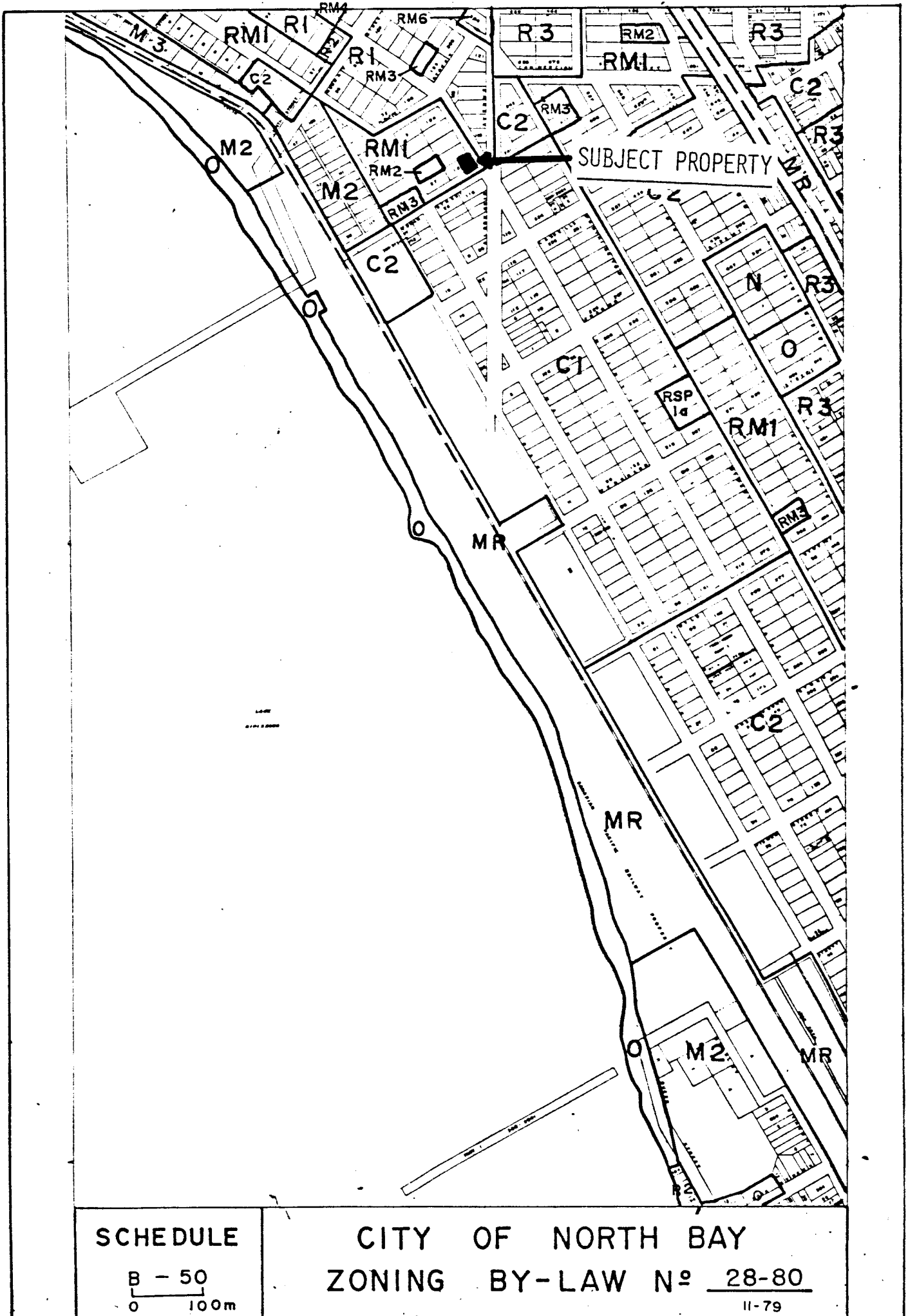
To By-law No. 141-82

Passed the 26th day of July ,

19 82 .


MAYOR


CITY CLERK



SCHEDULE

B - 50
0 100m

CITY OF NORTH BAY
ZONING BY-LAW N° 28-80

11-79

This is Schedule " B "

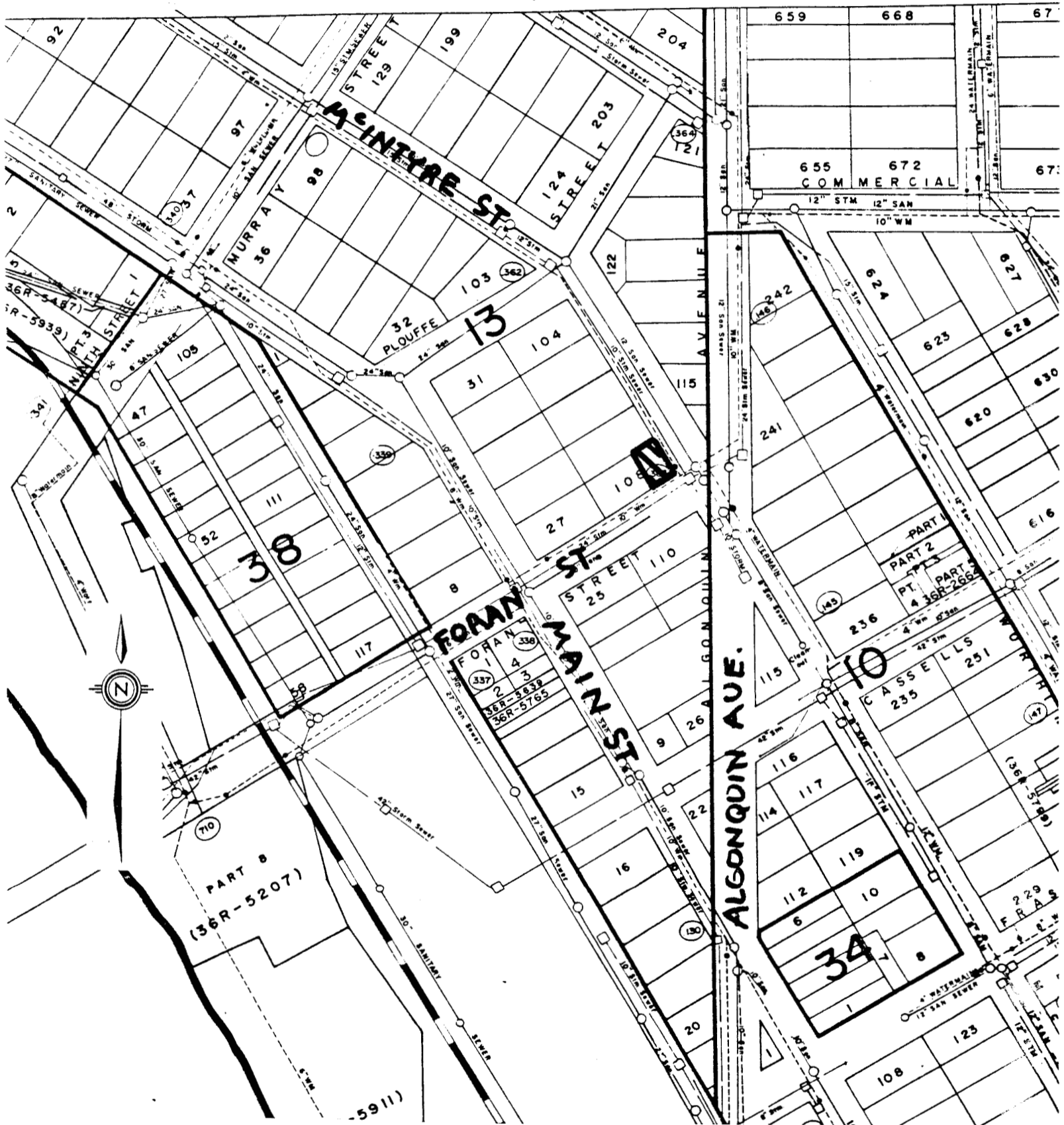
To By-law No. 141-82


Passed the 26th day of July

19 82 .

MAYOR *[Signature]*

[Signature]
CITY CLERK



 FROM "RESIDENTIAL MULTIPLE FIRST DENSITY(RM1)" TO
"GENERAL COMMERCIAL OUTER CORE(C,2)"

