

Appendix B5 - Cedar Heights Park Plan

Park Classification

- City Wide
- District
- Neighbourhood
- Parkette
- School Park Property
- Cemetery

Trail Classification

- Existing Snowmobile Trail
- Existing Trail and Major Sidewalk
- Future Trails
- Historical La Vase Portage

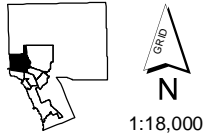
Land Use

- Open Space
- Lake Access

Symbols

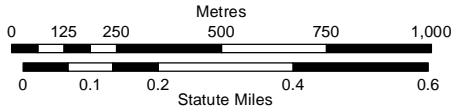
- Highway
- Major Road
- Railway
- River / Creek
- Lake
- Intermittent Water
- Planning District Boundary
- Municipal Boundary
- Settlement Area Boundary
- Trout Lake Watershed

This appendix to the Official Plan is attached for information purposes, and does not form part of the Official Plan.
This appendix should be read in conjunction with the text of the Official Plan.



1:18,000

Map Projection: Universal Transverse Mercator
Map Datum: North America Datum 1983 Zone 17 T (Metric)



Design and Developed by Planning Services, Engineering and Environmental Services, Parks, Recreation, and Leisure and Information Systems Departments.
© City of North Bay

Data Sources:
City of North Bay GIS
Municipal Property Assessment Corporation (MPAC)
Ontario Ministry of Natural Resources (OMNR)

The City of North Bay makes no guarantees, representations or warranties respecting the accuracy, completeness or reliability of the mapping data either express or implied. The City of North Bay specifically disclaims any and all liability, including without limitation, consequential and incidental damages, that may arise in any way from the use of or reliance on the mapping data.

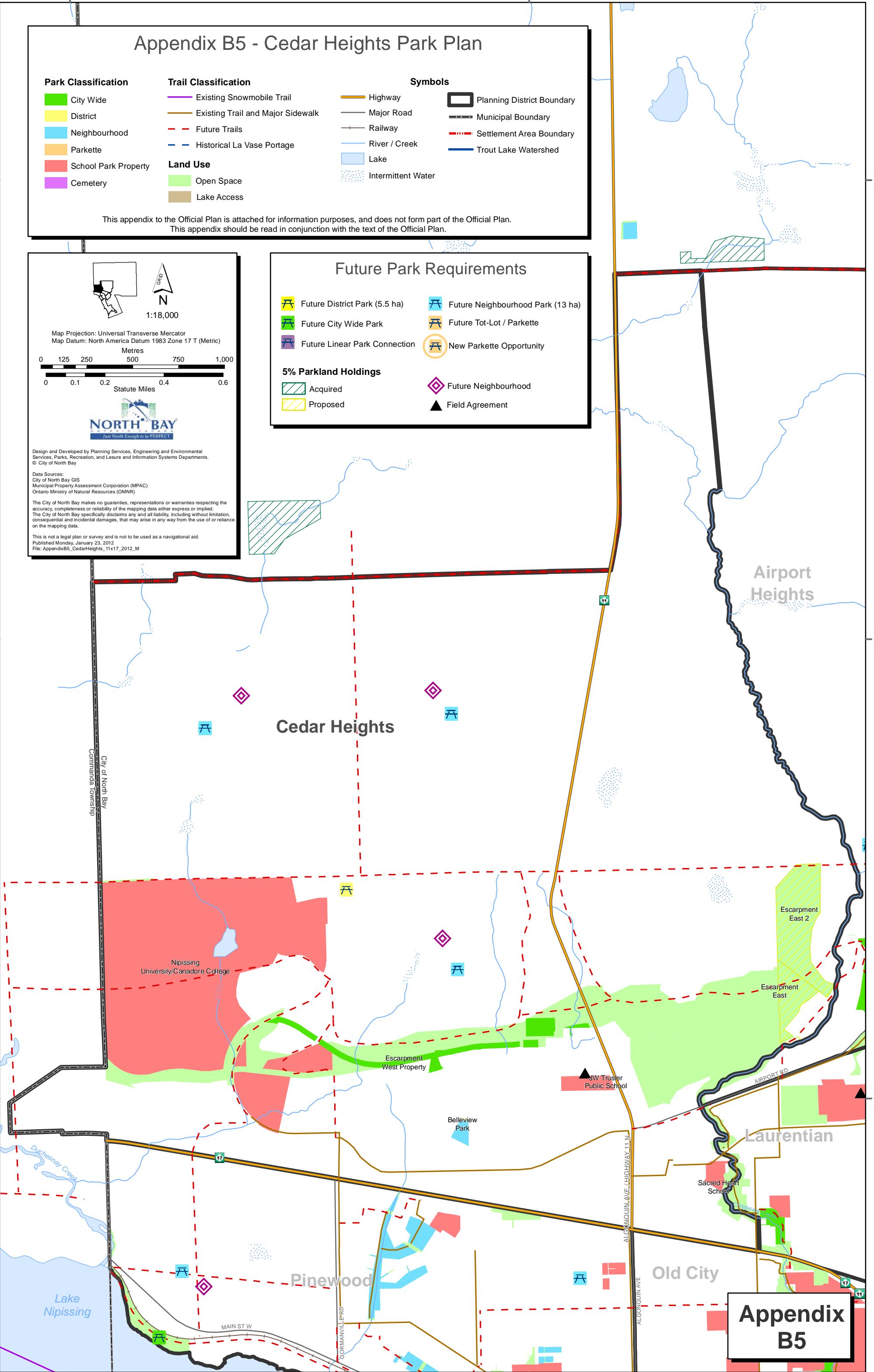
This is not a legal plan or survey and is not to be used as a navigational aid.
Published Monday, January 23, 2012
File: AppendixB5_CedarHeights_11x17_2012_M

Future Park Requirements

- Future District Park (5.5 ha)
- Future City Wide Park
- Future Linear Park Connection
- Future Neighbourhood Park (13 ha)
- Future Tot-Lot / Parkette
- New Parkette Opportunity

5% Parkland Holdings

- Acquired
- Proposed
- Future Neighbourhood
- Field Agreement



**Appendix
B5**