

**THE CORPORATION OF THE CITY OF NORTH BAY**

**BY-LAW NO. 122-97**

**A BY-LAW TO AMEND BY-LAW NO. 28-80 TO  
REZONE CERTAIN LANDS ON AIRPORT ROAD  
FROM AN "INDUSTRIAL HOLDING (MH)" ZONE  
TO A "LIGHT INDUSTRIAL ONE (M1)" ZONE  
(J. CUTSEY - AIRPORT ROAD)**

**WHEREAS** the owner of the subject property has requested a rezoning;

**AND WHEREAS** the Council of The Corporation of the City of North Bay has ensured that adequate information has been made available to the public, and has held at least one public meeting after due notice for the purpose of informing the public of this By-law;

**AND WHEREAS** it is deemed desirable to amend the zone designation shown on Schedule "C-7" of By-law No. 28-80 pursuant to Section 34 of the Planning Act R.S.O. 1990.

**NOW THEREFORE THE COUNCIL OF THE CORPORATION OF THE CITY OF NORTH BAY HEREBY ENACTS AS FOLLOWS:**

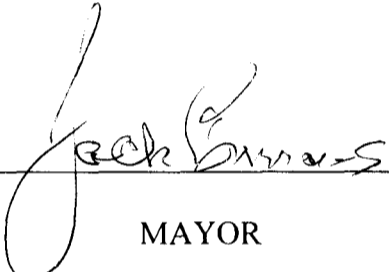
- 1) Schedule "C-7" of By-law No. 28-80 is amended by changing the zoning designation of the property shown on Schedule "A" attached hereto (which property is more particularly described as part of Parcel 5622 W&F) along Airport Road in the City of North Bay, shown as hatched on Schedule "B" attached hereto from an "Industrial Holding (MH)" zone to a "Light Industrial One (M1)" zone.
- 2) All buildings or structures erected or altered and the use of land in such "Light Industrial One (M1)" zone shall conform to all applicable provisions of By-law No. 28-80 of The Corporation of the City of North Bay.
- 3)
  - a) Notice of this By-law shall be given by the Clerk in the manner and form and to the persons prescribed by Section 4 of O. Reg. 199/96.
  - b) Where no notice of appeal is filed with the Clerk of The Corporation of the City of North Bay within twenty (20) days after the day that the giving of written notice as required by the Act is completed, then this By-law shall be deemed to have come into force on the day it was passed.
  - c) Where one or more notices of appeal are filed with the Clerk of The Corporation of the City of North Bay within twenty (20) days after the day that the giving of written notice as required by the Act is completed, setting out the objection to the By-law and the reasons in support of the objection, then this By-law shall not come into force

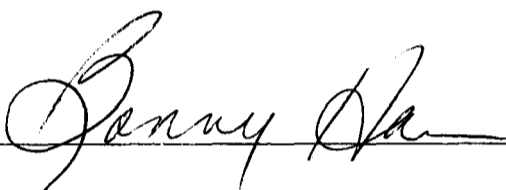
until all appeals have been finally disposed of, whereupon the By-law shall be deemed to have come into force on the day it was passed.

READ A FIRST TIME IN OPEN COUNCIL THE 15th DAY OF December  
199 7.

READ A SECOND TIME IN OPEN COUNCIL THE 15th DAY OF December  
199 7.

READ A THIRD TIME IN OPEN COUNCIL AND PASSED THIS 15th DAY  
OF December 1997.

  
MAYOR

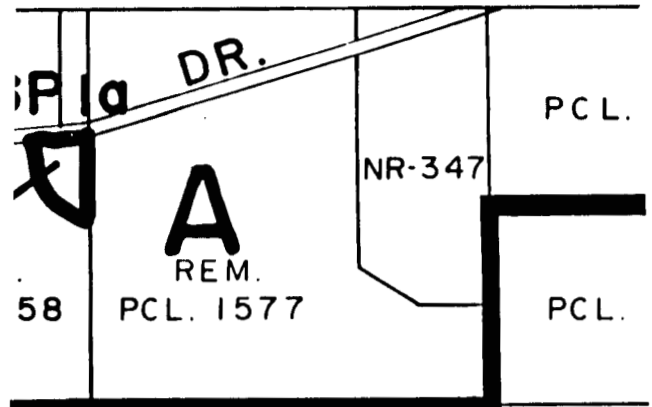
  
CITY CLERK

19

18

17

LOT



This is Schedule " A "

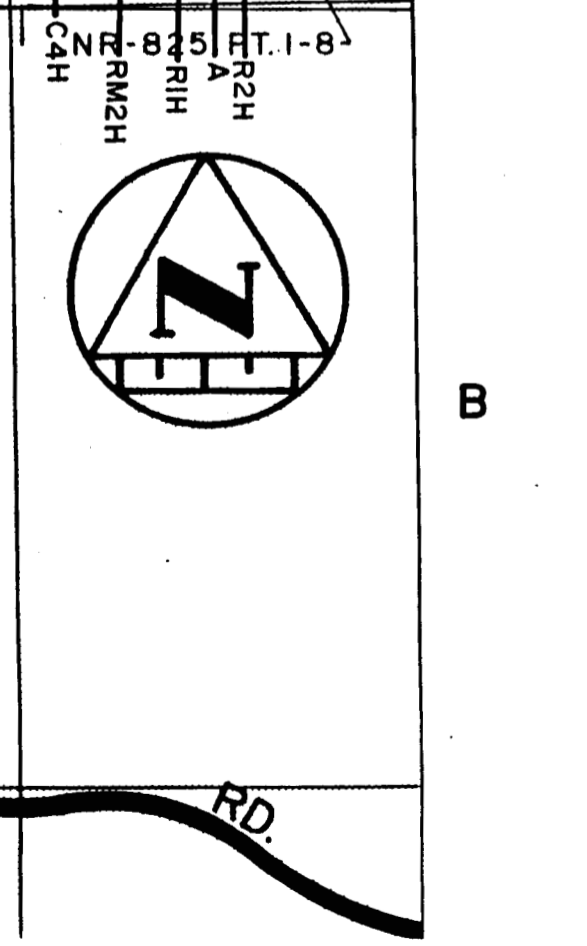
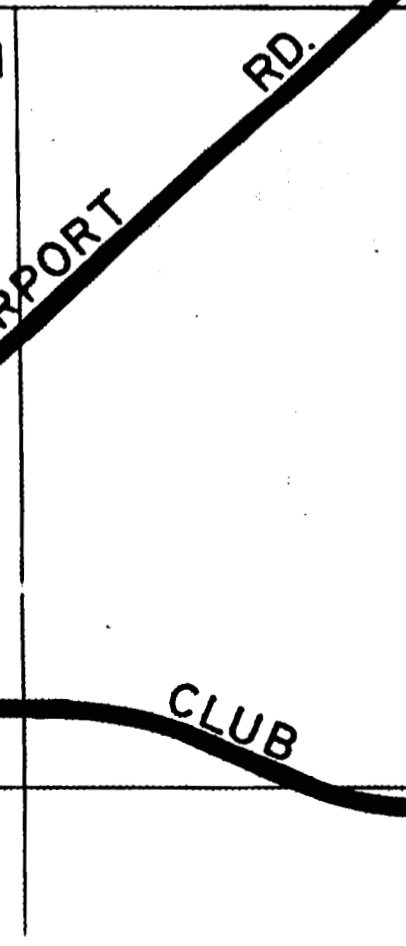
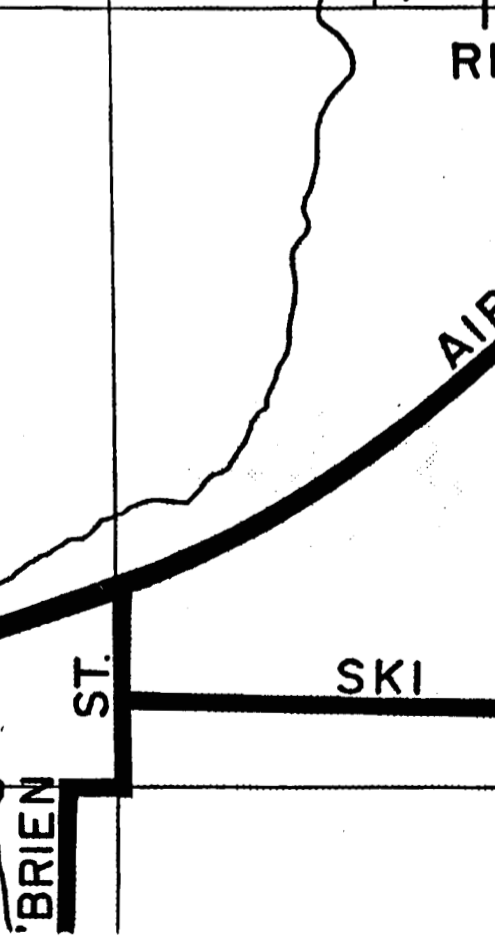
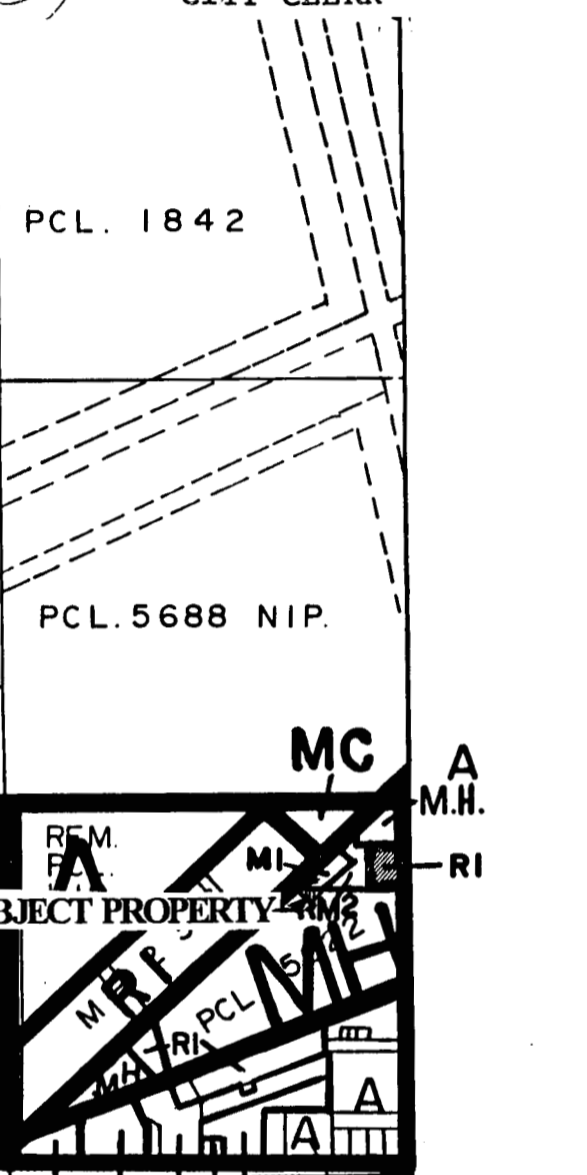
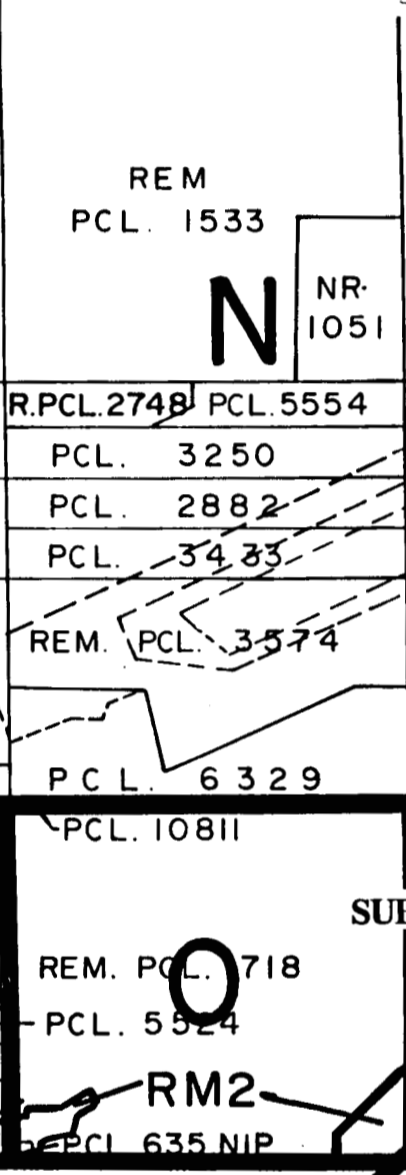
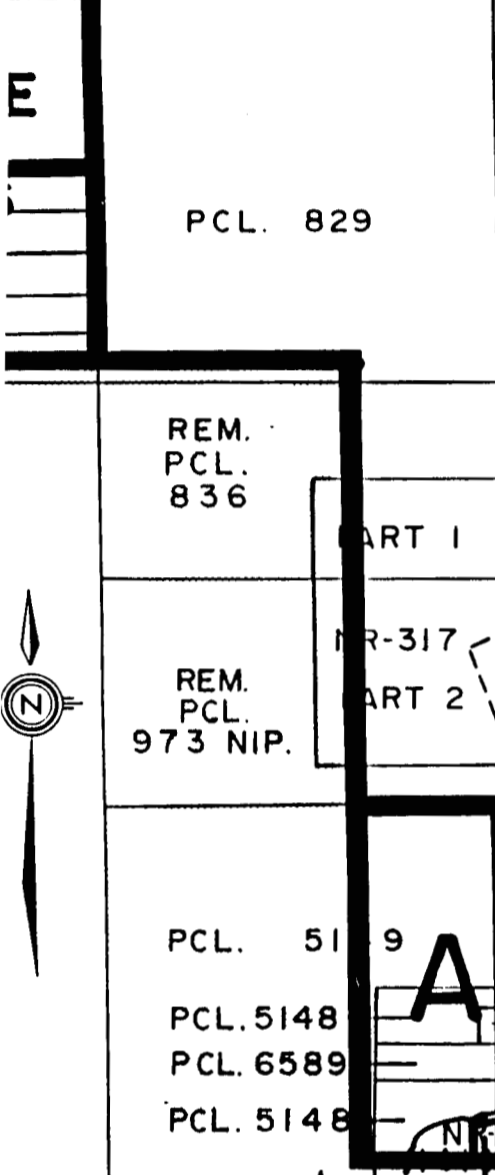
To By-law No. 122-97

Passed the 15th day of December

19 97 .

*Jack Beames*  
MAYOR

*Dorothy*  
CITY CLERK



DR.

58

REM.

PCL. 1577

PCL.

NR-347

PCL.

REM

PCL. 829

REM

PCL. 1533

PCL. 1842

NR-1051

REM.

PCL. 836

PART 1

R.PCL. 2748

PCL. 5554

PCL. 3250

PCL. 2882

PCL. 3483

NR-317

REM. PCL. 3574

PCL. 5688 NIP.

PART 2

REM. PCL. 973 NIP.

PCL. 6329

PCL. 10811

REM. PCL. 718

PCL. 5524

PCL. 519

PCL. 5148

PCL. 6589

PCL. 5148

RM2

PCL. 635 NIP.

MC

A M.H.

RI

SUBJECT PROPERTY

MR

PCL. 5

AIRPORT RD.

SKI CLUB RD.

BRIEN ST.

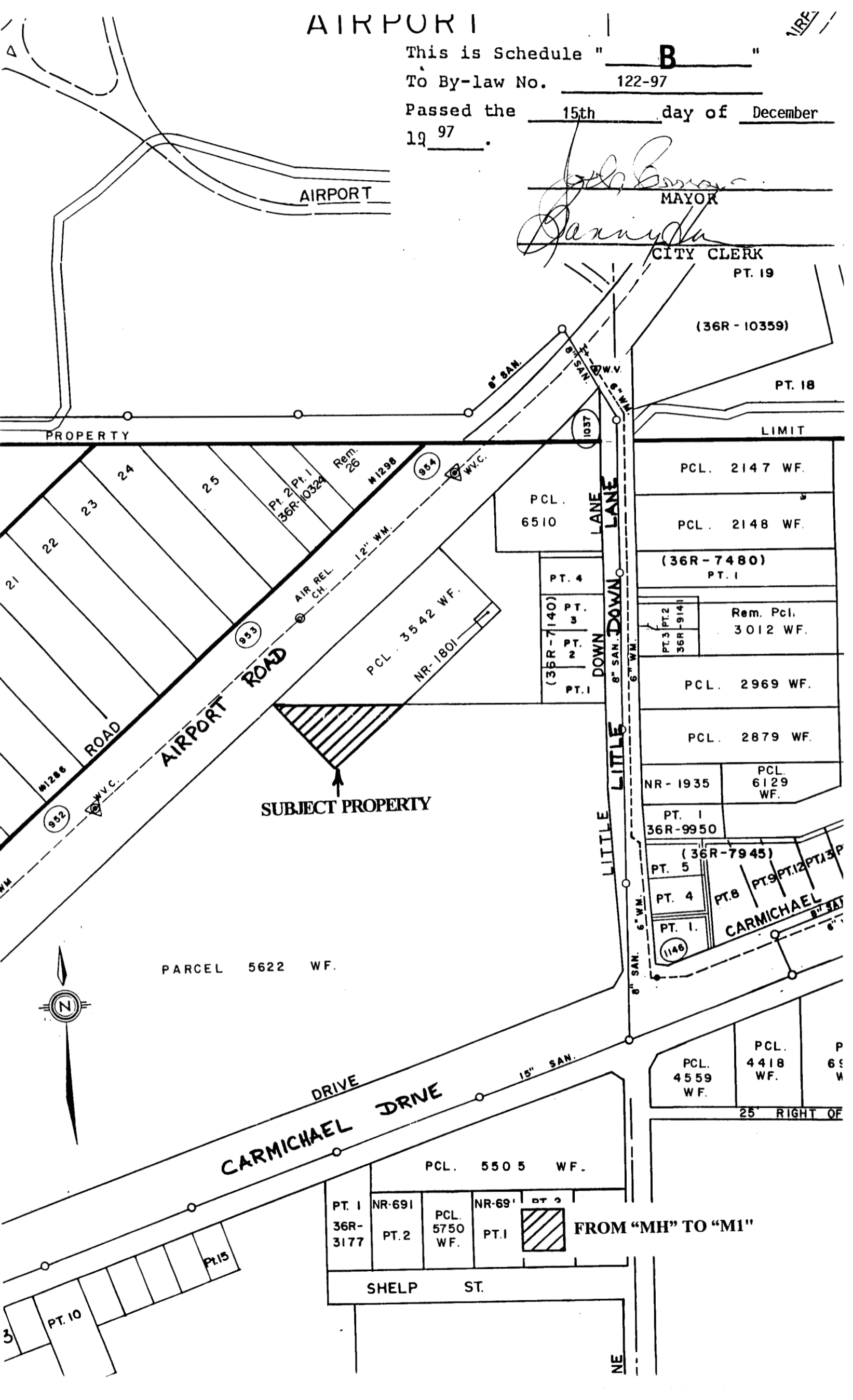
# AIRPORT

This is Schedule " B "

To By-law No. 122-97

Passed the 15th day of December  
19 97.

*John Brown*  
MAYOR  
*Danny...*  
CITY CLERK



AIRPORT

PROPERTY

PT. 19

(36R - 10359)

PT. 18

LIMIT

PCL. 2147 WF.

PCL. 2148 WF.

(36R - 7480)  
PT. 1

Rem. Pcl.  
3012 WF.

PCL. 2969 WF.

PCL. 2879 WF.

NR - 1935  
PCL. 6129 WF.

PT. 1  
36R-9950

(36R-7945)  
PT. 5  
PT. 4  
PT. 1.  
CARMICHAEL  
PT. 8  
PT. 9  
PT. 12  
PT. 13  
PT. 14  
PT. 15  
PT. 16  
PT. 17  
PT. 18  
PT. 19  
PT. 20  
PT. 21  
PT. 22  
PT. 23  
PT. 24  
PT. 25  
PT. 26  
PT. 27  
PT. 28  
PT. 29  
PT. 30  
PT. 31  
PT. 32  
PT. 33  
PT. 34  
PT. 35  
PT. 36  
PT. 37  
PT. 38  
PT. 39  
PT. 40  
PT. 41  
PT. 42  
PT. 43  
PT. 44  
PT. 45  
PT. 46  
PT. 47  
PT. 48  
PT. 49  
PT. 50  
PT. 51  
PT. 52  
PT. 53  
PT. 54  
PT. 55  
PT. 56  
PT. 57  
PT. 58  
PT. 59  
PT. 60  
PT. 61  
PT. 62  
PT. 63  
PT. 64  
PT. 65  
PT. 66  
PT. 67  
PT. 68  
PT. 69  
PT. 70  
PT. 71  
PT. 72  
PT. 73  
PT. 74  
PT. 75  
PT. 76  
PT. 77  
PT. 78  
PT. 79  
PT. 80  
PT. 81  
PT. 82  
PT. 83  
PT. 84  
PT. 85  
PT. 86  
PT. 87  
PT. 88  
PT. 89  
PT. 90  
PT. 91  
PT. 92  
PT. 93  
PT. 94  
PT. 95  
PT. 96  
PT. 97  
PT. 98  
PT. 99  
PT. 100

SUBJECT PROPERTY

PARCEL 5622 WF.



CARMICHAEL DRIVE

PCL. 5505 WF.

PT. 1  
NR-691  
36R-3177

PT. 2  
PCL. 5750 WF.

PT. 1  
NR-691  
DT 2

FROM "MH" TO "M1"

SHELP ST.

PCL. 4559 WF.  
PCL. 4418 WF.  
25' RIGHT OF

NE