

THE CORPORATION OF THE CITY OF NORTH BAY

BY-LAW NO. 13-86

A BY-LAW TO AMEND BY-LAW NO. 28-80 TO REZONE CERTAIN LANDS ON BOOTH ROAD AND FERRIS DRIVE FROM "M.2" AND "M.3" TO "INDUSTRIAL HOLDING (MH)", "LIGHT INDUSTRIAL THREE (M.3)" AND "LIGHT INDUSTRIAL TWO (M.2)" (CITY INDUSTRIAL PARK)

WHEREAS the owner of the subject property has requested a rezoning;

AND WHEREAS the Council of The Corporation of the City of North Bay has ensured that adequate information has been made available to the public and has held at least one public meeting after due notice for the purpose of informing the public of this By-law;

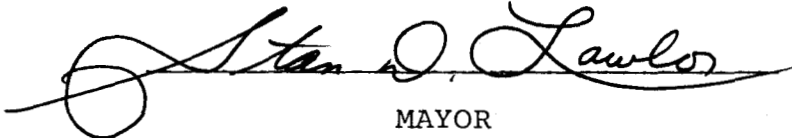
AND WHEREAS it is deemed desirable to amend the zone designation shown on Schedules B-81 and B-82 of By-law No. 28-80 pursuant to Section 34 of The Planning Act.


NOW THEREFORE THE COUNCIL OF THE CORPORATION OF THE CITY OF NORTH BAY HEREBY ENACTS AS FOLLOWS:

1. Schedules B-81 and B-82 of By-law No. 28-80 are amended by changing the zoning designation of the property shown on Schedules "A" and "B" attached hereto (which property is more particularly described as part of Blocks 1, 2, 3, 4, and 6, Plan M-540 and Parcels 1782 W&F, 6256 W&F, 6030 W&F, 4608 W&F, 2426 W&F, Part 1, Plan 36R-5955 and Part of Parcel 6213 W&F, in the City of North Bay, and shown as hatched on Schedules "C" and "D" attached hereto and forming part hereof), from a "Light Industrial Two (M.2)" Zone and a "Light Industrial Three (M.3)" Zone to an "Industrial Holding (MH)" Zone, "Light Industrial Three (M.3)" Zone and "Light Industrial Two (M.2)" Zone.
2. All buildings or structures erected or altered and the use of land in such "Industrial Holding (MH)" Zone, "Light Industrial Two (M2)" Zone and "Light Industrial Three (M.3)" Zone shall conform to all applicable provisions of By-law No. 28-80 of The Corporation of the City of North Bay.
- 3.a) Notice of this By-law shall be given by the Clerk in the manner and form and to the persons prescribed by Ontario Regulation 404/83, not later than 15 days after the day this By-law is passed.

- b) Where no notice of appeal is filed with the Clerk of The Corporation of the City of North Bay within thirty-five (35) days from the passing of this By-law, then this By-law shall be deemed to have come into force on the day it was passed.
- c) Where one or more notices of appeal are filed with the Clerk of The Corporation of the City of North Bay within thirty-five (35) days from the passing of this By-law setting out the objection to the By-law and the reasons in support of the objection, then this By-law shall not come into force until all appeals have been finally disposed of, whereupon the By-law shall be deemed to have come into force on the day it was passed.

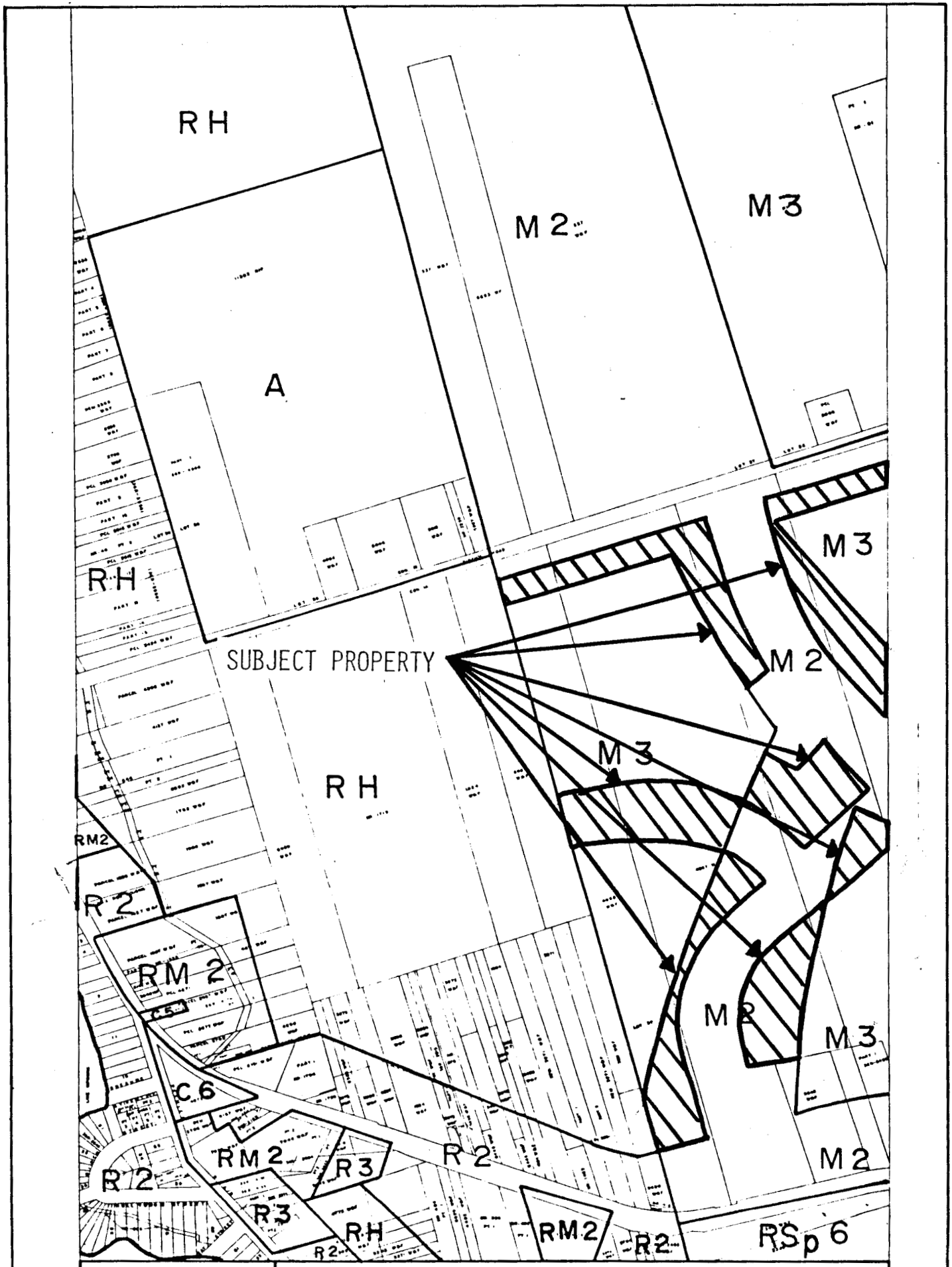
READ A FIRST TIME IN OPEN COUNCIL THE 20THDAY OF JANUARY 1986.
READ A SECOND TIME IN OPEN COUNCIL THE 17THDAY OF FEBRUARY 1986.
READ A THIRD TIME IN OPEN COUNCIL AND PASSED THIS 17TH DAY OF
FEBRUARY 1986 .


MAYOR


CITY CLERK

This is Schedule " A "
To By-law No. 13-86
Passed the 17th day of February,
19 86 .

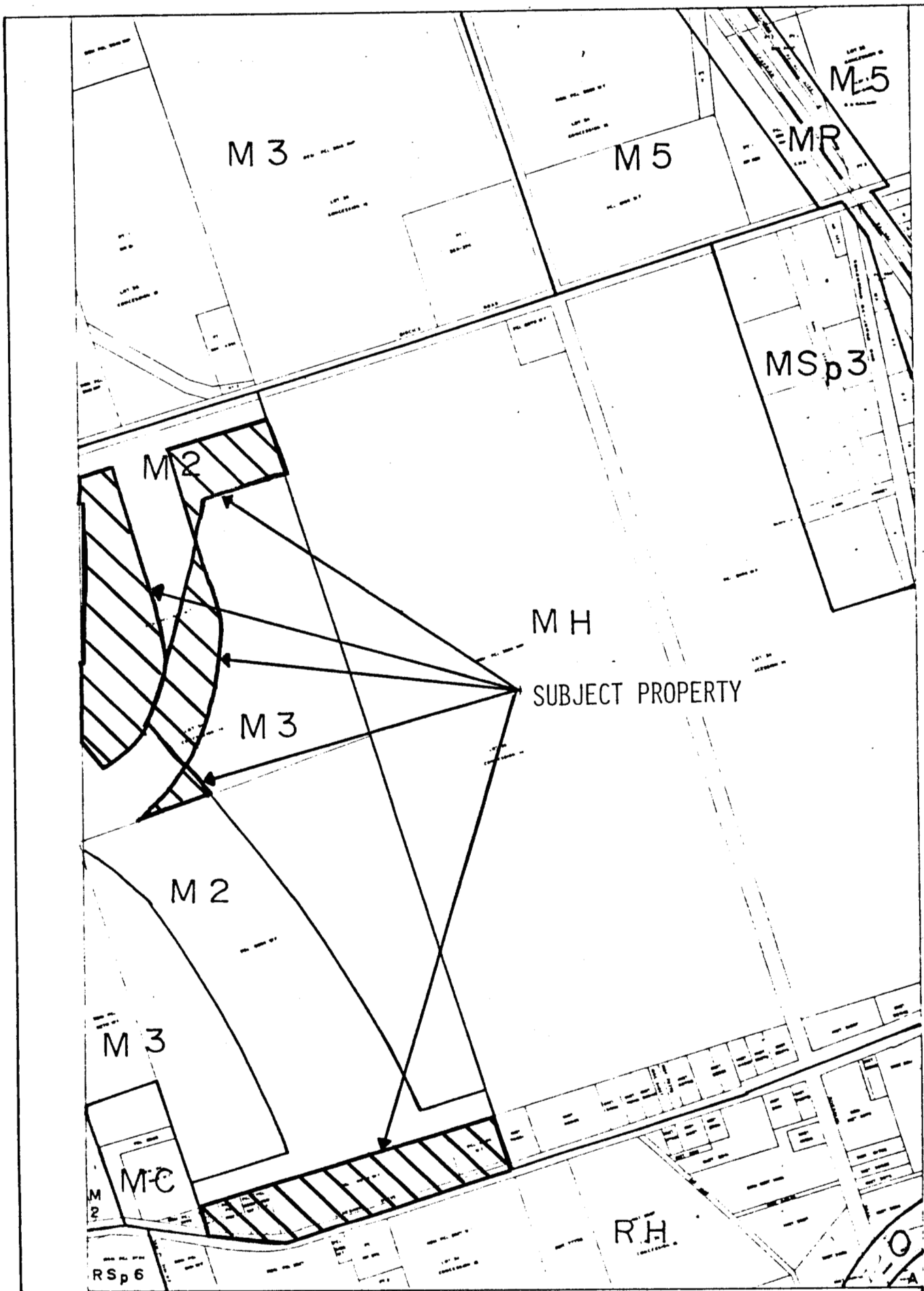
Stan J Lawlor
MAYOR
A. B. Burton
CITY CLERK



SCHEDULE B - 81 100m	CITY OF NORTH BAY ZONING BY-LAW N ^o <u>28-80</u> 11-79
----------------------------	---

This is Schedule " B "
To By-law No. 13-86
Passed the 17th day of February
19 86 .

Stan D. Lawlor
MAYOR
D. B. [unclear]
CITY CLERK

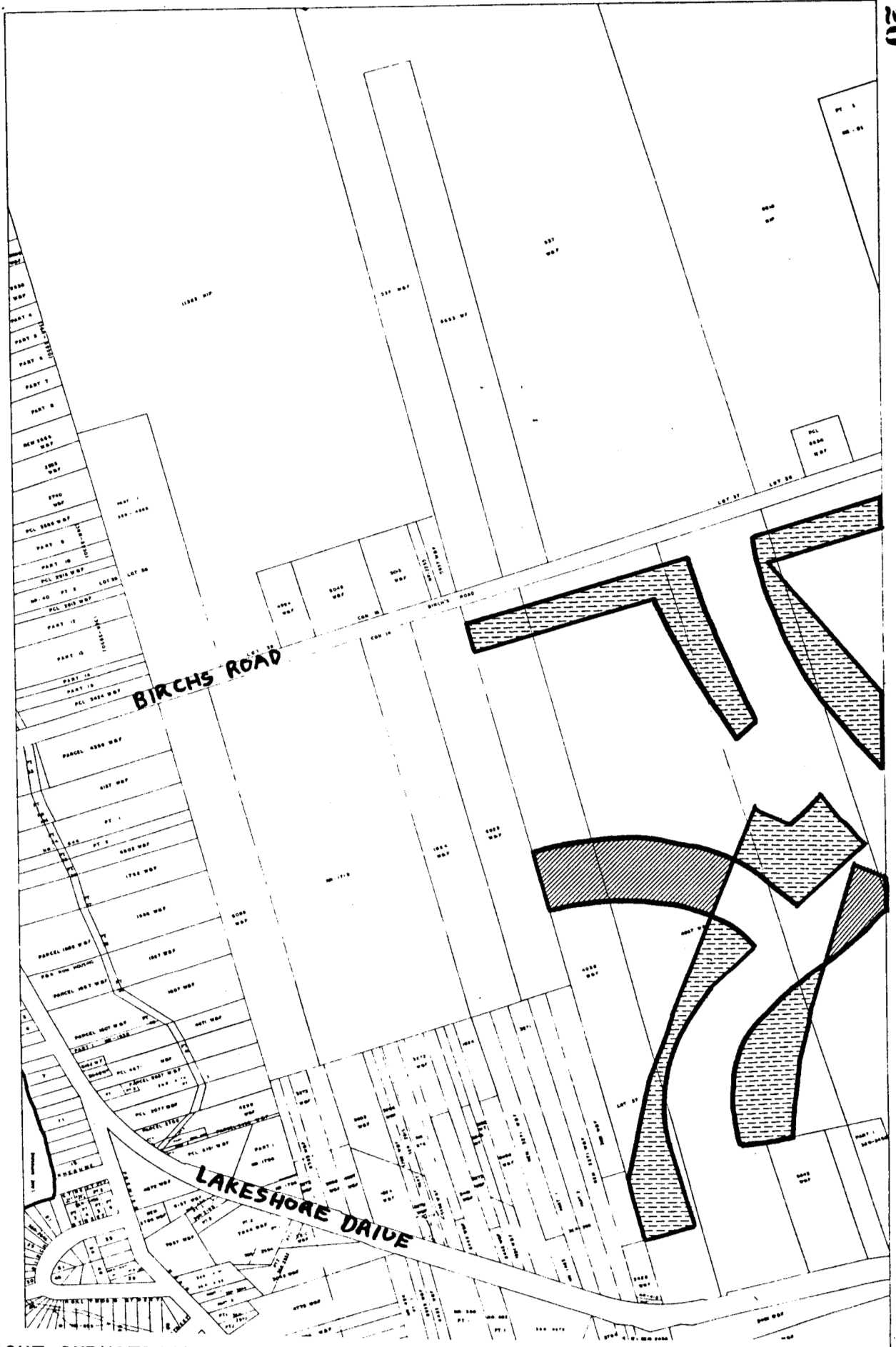


SCHEDULE B - 82	CITY OF NORTH BAY ZONING BY-LAW N ^o 28-80
--------------------	---

11-79

This is Schedule " C "
To By-law No. 13-86
Passed the 17th day of February ,
19 86 .

Stan D. Lawley
MAYOR
A. B. Burton
CITY CLERK



FROM "LIGHT INDUSTRIAL TWO(M.2)" TO "LIGHT INDUSTRIAL THREE(M.3)"



FROM "LIGHT INDUSTRIAL THREE(M.3)" TO "LIGHT INDUSTRIAL TWO(M.2)"

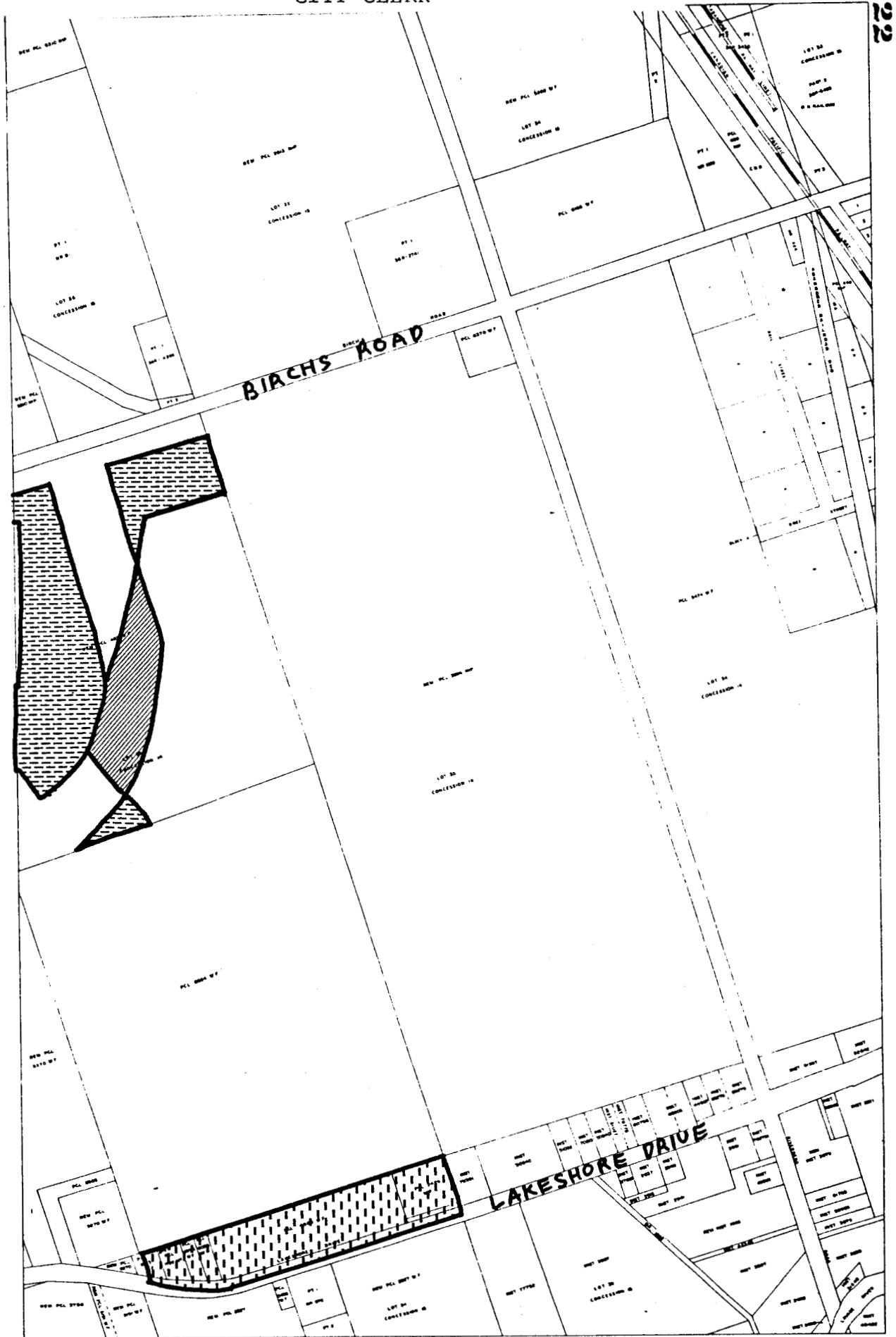
This is Schedule " D "

To By-law No. 13-86

Passed the 17th day of February ,
19 86 .

Stan D. Lawlor
MAYOR

R. J. Butler
CITY CLERK



FROM "LIGHT INDUSTRIAL TWO(M.2)" TO "INDUSTRIAL HOLDING(MH)"

FROM "LIGHT INDUSTRIAL TWO(M.2)" TO "LIGHT INDUSTRIAL THREE(M.3)"

FROM "LIGHT INDUSTRIAL THREE(M.3)" TO "LIGHT INDUSTRIAL TWO(M.2)"