

THE CORPORATION OF THE CITY OF NORTH BAY

BY-LAW NO. 88-84

BEING A BY-LAW FOR ALTERING PART OF A HIGHWAY AND TO TEMPORARILY CLOSE PART OF A HIGHWAY. (WYLD & RICHARDSON)

WHEREAS the Council of The Corporation of the City of North Bay has authorized the reconstruction of Wyld Street between Chippewa and Richardson Streets.

AND WHEREAS the said reconstruction of Wyld Street will include alterations to the curb line of the roadway so as to create a cul-de-sac.

AND WHEREAS the Municipal Act, R.S.O. 1980, Chapter 302, sections 208 (43), 298 and 301 authorizes the Council to pass by-laws to temporarily close highways, to establish, layout, widen, alter or divert part of a highway and to give notice of a by-law to alter a portion of a highway;

AND WHEREAS notice of this By-law has been published at least once a week for four successive weeks and the council has heard any person who claims that his land will be prejudicially affected by this by-law and who has applied to be heard.

NOW THEREFORE THE COUNCIL OF THE CORPORATION OF THE CITY OF NORTH BAY HEREBY ENACTS AS FOLLOWS:

1. Wyld Street in the City of North Bay shall be temporarily closed between Chippewa Street and Richardson Street from September 1, 1984 until October 15, 1984 for construction, repair and improvement to that portion of the highway.
2. (a) Richardson Street at its intersection with Wyld Street shall be altered according to Plans attached hereto.
(b) Richardson Street, west of Wyld Street, shall be closed to vehicular traffic as of and from September 1, 1984.
3. The Corporation of the City of North Bay shall provide and keep in repair a reasonable temporary alternative route for traffic and for all property owners who cannot obtain access to their property by reason of the temporarily closing of that part of Wyld Street authorized by section 1.
4. The Director of Planning and Works and his duly authorized delegates shall, while a portion of Wyld Street is temporarily closed, erect at each end of such portion of the highway, and where an alternative route deviates therefrom, a barricade upon which an adequate warning device shall be exposed and in good working order continuously from sunset until sunrise and at such points there shall be erected a detour sign indicating the alternative route and containing a notice that the highway is closed to traffic.

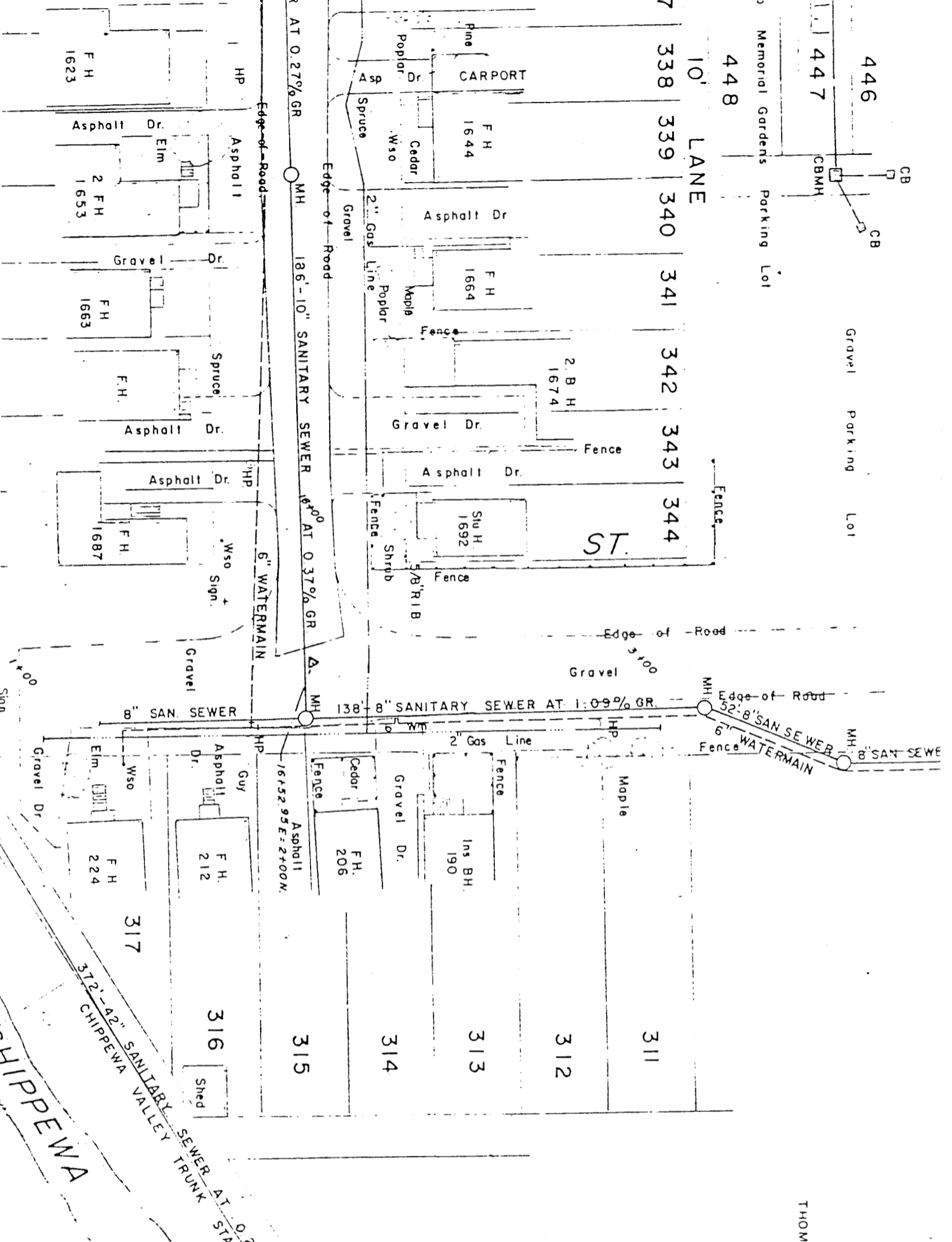
READ A FIRST TIME IN OPEN COUNCIL THE 9TH DAY OF JULY , 1984.

READ A SECOND TIME IN OPEN COUNCIL THE 10TH DAY OF SEPTEMBER , 1984.

READ A THIRD TIME IN OPEN COUNCIL AND ENACTED AND PASSED THIS 10TH DAY OF SEPTEMBER, 1984.


MAYOR

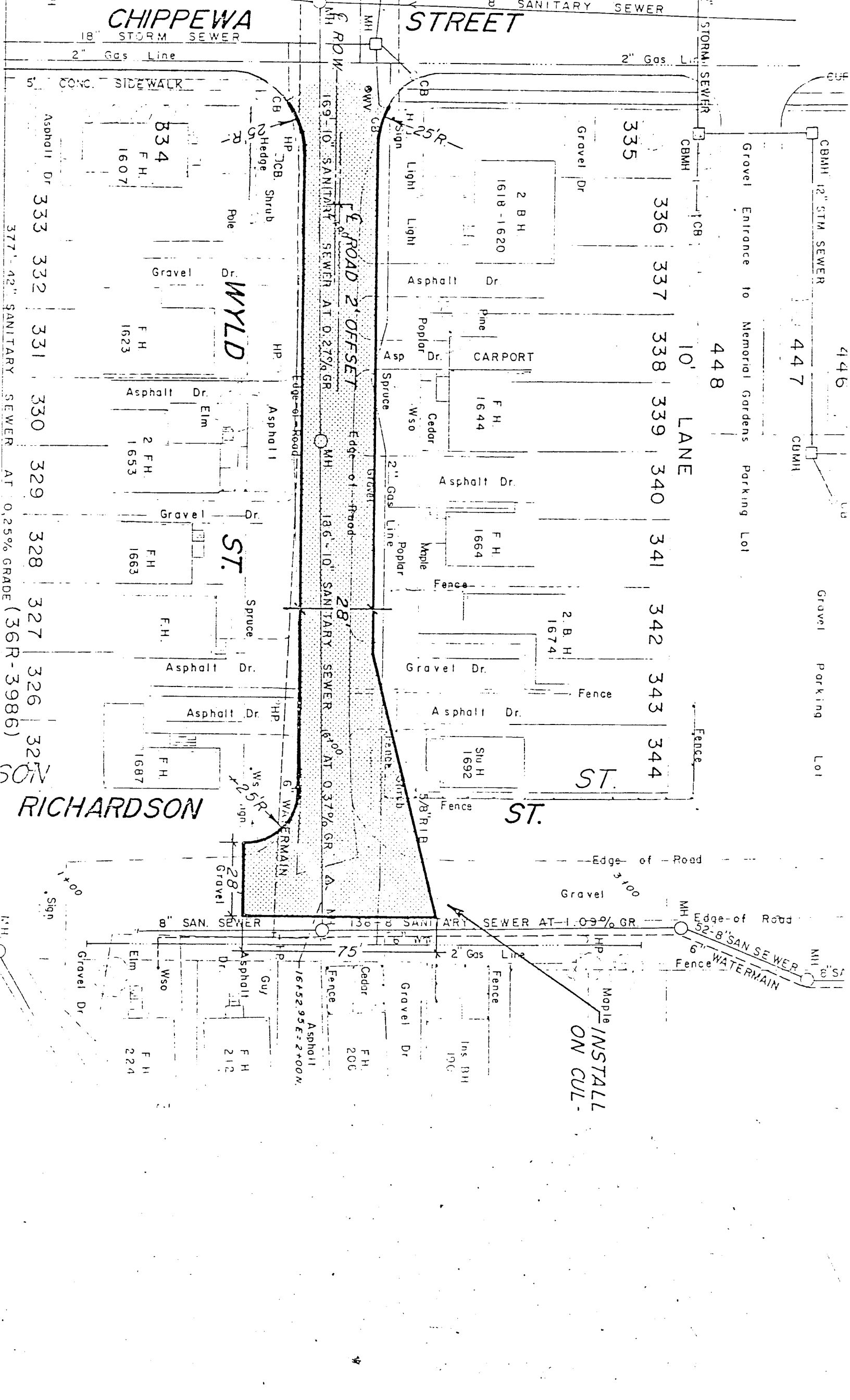

DEPUTY CLERK



THOM

CHIPPEWA STREET

STREET



RICHARDSON ST

INSTALL ON CUL

377' 42" SANITARY SEWER AT 0.25% GRADE (36R-3986)

16452.95E=2+00M